

# Dr. Fridtjof Nansen Replacement – Building progress

Update by 30th June 2016



**Main milestones:** First steel cut: 13.01.2015  
Keel laying: 23.04.15  
Launch of vessel: 23.12.15  
Scheduled trial start up – ref MP5: Dockside trials 16.08.16 – Sea trials: 01.10.16  
Scheduled Delivery – ref MP5 : 07.11.16 (Plan B: 21.11.16)

## General comments:

- Week 24: Project meeting. Representatives from IMR and Ministry of foreign affairs attending.
  - Main topics: Delayed delivery and revised progress and test plan
- Week 25: Representatives from users (CDCF) on site. General view of vessel with review of laboratory arrangements etc.
- Site team supported with representative from Instrument dep. and ship electrician from primo June.

## Progress:

- Average workforce remains at 160 -170 on board DFN. (Steel, outfitting & piping 55 – Electricians 60 – Accommodation & Insulation 40 – Painters 10-15) working 10-12 hrs/day 5 days/week.
  - Due to AG`s heavy workload (6 vessels under construction), their total workforce is now close to 600 workers, which is a doubling of personnel the last 12 months
- High activity in all areas, but priority is set on termination and assembly of machinery and support systems in engine rooms, bridge and other technical areas.
- By date the progress is mainly on schedule with MP5.

- **Hull Construction:** External outfitting:

- Unit 54 (main mast) installed week 25
- Main crane is further delayed from Triplex, now scheduled for July 20<sup>th</sup>.

- **Piping:**

Pipe installation finally nearing its end, still some minor auxiliary systems in engine & technical areas and outside drain piping to be completed.

- Pressure testing and flushing of the various systems ongoing.

- **Propulsion and maneuvering:** Propulsion motor aligned and chock fastened week 24. Termination and assembly of auxiliary systems and components progressing well. Main exhaust pipes insulated and completed to 1<sup>st</sup> dk.
- **Scientific equipment and Labs:** Piping, cabling and insulation work in the Laboratories is close to completion. Installation of Field bus racks and cabinets ongoing.
- **Electrical: Cable trays and cabling**
  - Cable trays: All main cable trays installed.
  - Cables pulled: 135.000m of a yard estimated total of 165.000m (given total is from my point of view somewhat under estimated?)
  - Terminations: 4600 cables connected by date– Estimated total of cables to be connected are 9800.
- **Accommodation:** Wall paneling in accommodation areas completed, Viscoelastic compound laid on all flooring. Ceiling panel installation started on Tween dk. Freezer room paneling ongoing.
- **Sandblasting & Painting:** Tk`s: 200C, 400C & 810C and drop keel trunk completed this period. Sandblasting and metalizing of aft dk will start this week.  
Still lot of sandblasting and paint work (tanks) remaining, progress seems to suffer a bit from workload on other projects – fight for the same equipment and resources!

#### At outfitting berth





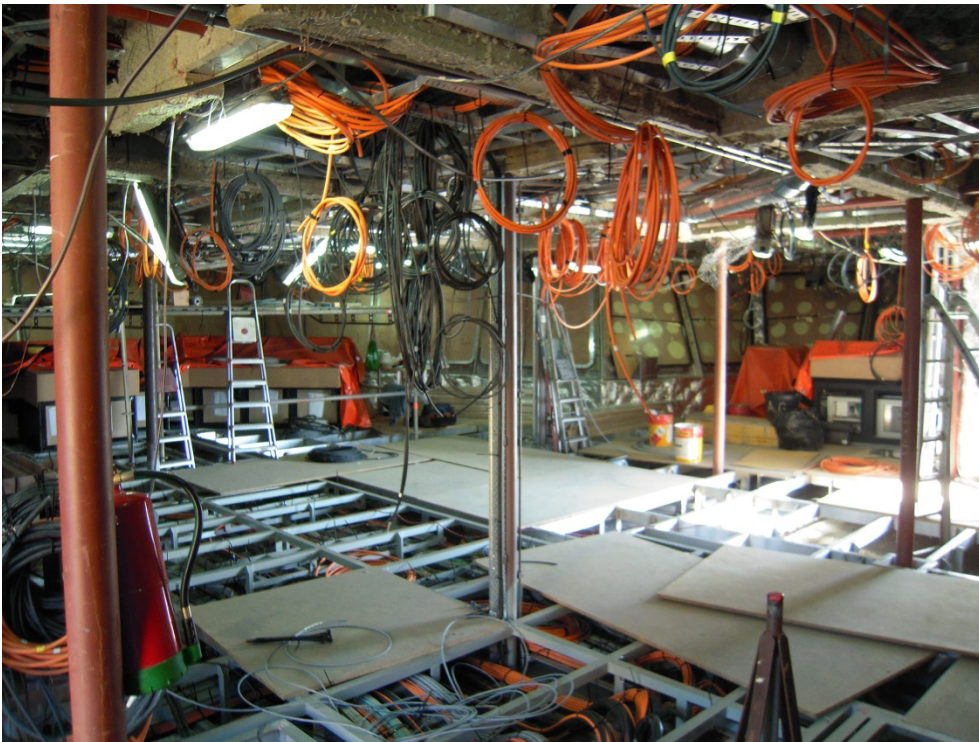




**Crow`s nest lifted on board**



**Insulation work and main cabling on bridge almost completed.**



**Cabins on Tween and Main deck ready for ceiling panel and floor cover.**



**Noise insulation above ceiling - cabin to cabin/corridor.**





**A-door installation in progress**



**Pantry floor ready for tiling**



Freezer rooms in progress



Scientist cabin Dk 3.





**Propulsion motors aligned and chock fastened**



**Exhaust pipes encapsulated**





Pipe termination and assembly of auxiliary components progressing

